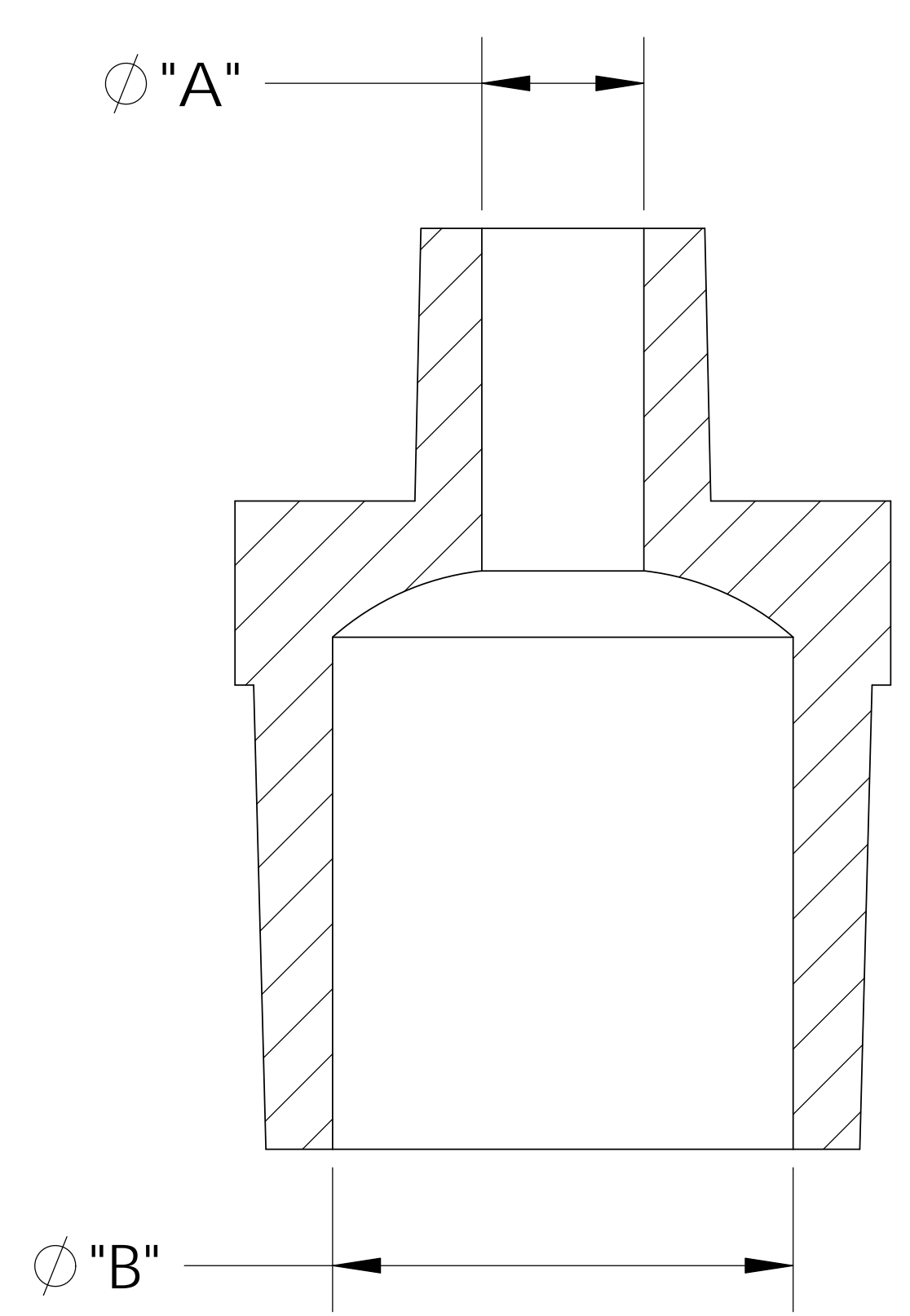
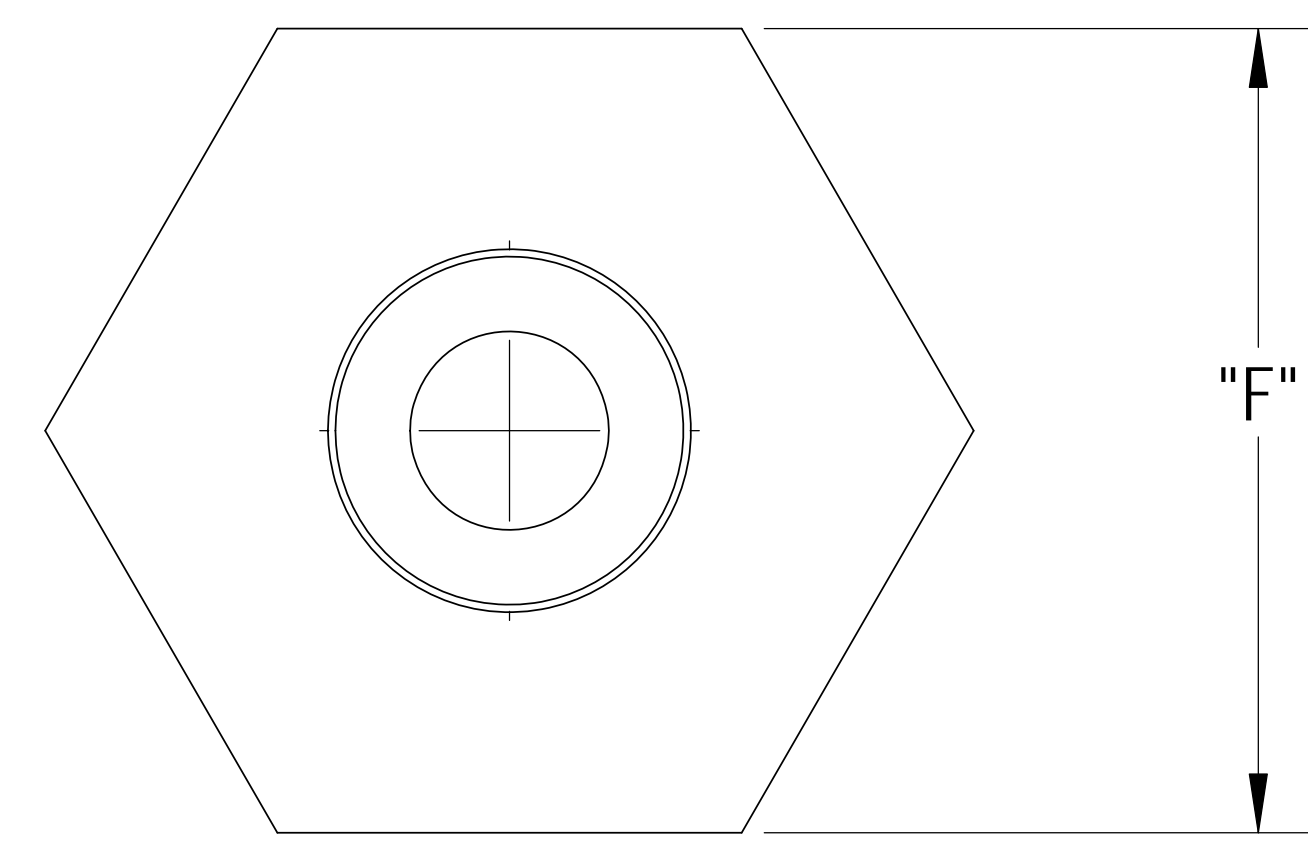
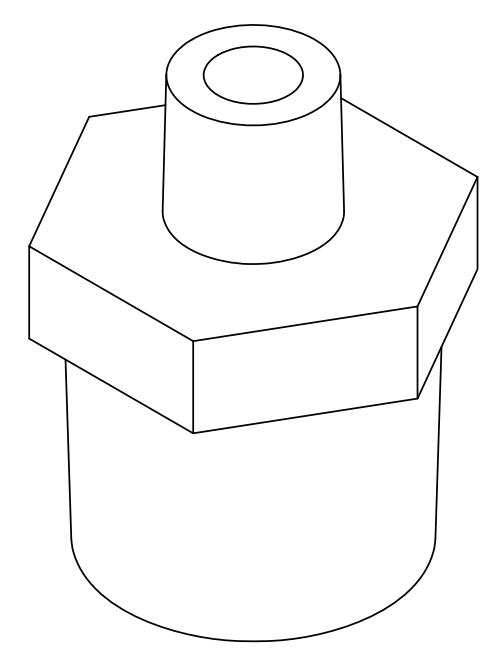
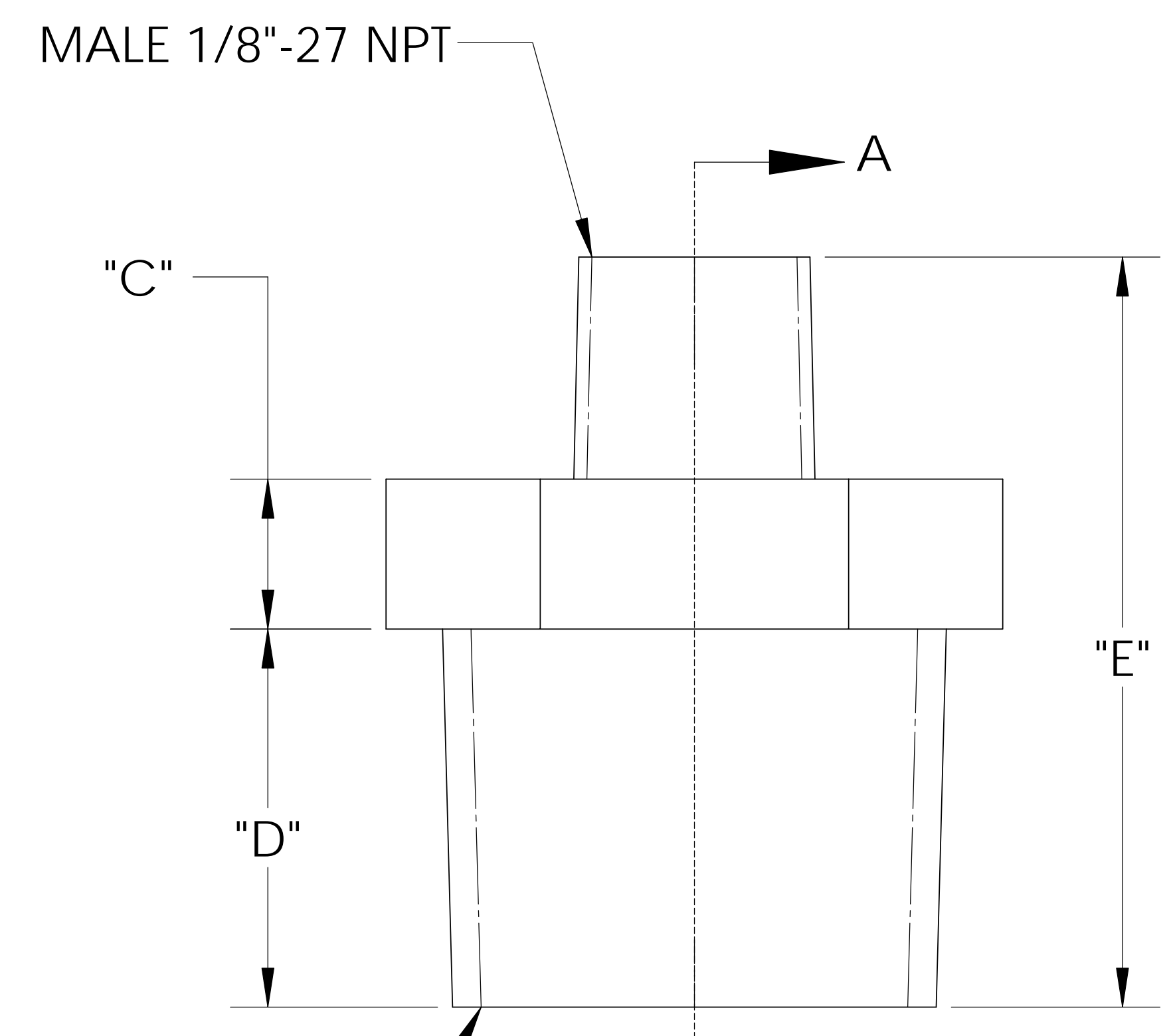


8 7 6 5 4 3 2 1

UNCONTROLLED IF PRINTED; CONTROLLED DOCUMENT LOCATED IN IQMS DOCUMENT CONTROL



SECTION A-A



MALE 1/2"-14 NPT

CATALOG NO.	DESCRIPTION	MATERIAL	DIM "A"	DIM "B"	DIM "C"	DIM "D"	DIM "E"	DIM "F"
TRN6082/PP	1/2" X 1/8" PP	POLYPROPYLENE	.210	.600	.250	.60	1.21	.87
TRN6082/P	1/2" X 1/8" P	POLYETHYLENE	.210	.600	.250	.60	1.21	.87
TRN6082/N	1/2" X 1/8" N	NYLON	.220	.625	.250	.63	1.25	.89

SHOWN

REV	WRO#	DESCRIPTION
C	95.00126	CONVERTED TO 3D FORMAT
HISTORY		

UNLESS OTHERWISE SPECIFIED:		
DIMENSIONS ARE IN INCHES		
TOLERANCES:		
ANGULAR: ±0.5°		
X.X = ± 0.1		
X.XX = ± 0.05		
X.XXX = ± 0.015		
REMOVE ALL SHARP EDGES AND BURRS		
BLEND ALL RADII TO 0.01IN		
INTERPRET GEOMETRIC TOLERANCING PER: ANSI Y 14.5 1994		
MATERIAL: PP, P, N		
FINISH: NA		
THIRD ANGLE PROJECTION:		
NAME	KDJ	DATE
DRAWN	KDJ	12/29/10
CHECKED	KDJ	12/29/10
ENG APPR.		XX/XX/XX
MFG APPR.		XX/XX/XX
Q.A.		XX/XX/XX
COMMENTS:		

Thogus You think it, we can make it...

 33490 PIN OAK, AVON LAKE, OH 44012

TITLE: **1/2" NPT X 1/8" NPT REDUCER NIPPLE**

SIZE B	DWG. NO. TRN6082	REV C
SCALE: 2:1	MASS:	SHEET 1 OF 1

NOTES:
 1) POLYPROPYLENE HAS COLOR OPTIONS:
 BLACK = TRN6082/PPB
 NATURAL = TRN6082/PPN

PROPRIETARY AND CONFIDENTIAL
 THE INFORMATION CONTAINED IN THIS DRAWING IS THE SOLE PROPERTY OF THOGUS PRODUCTS COMPANY. ANY REPRODUCTION IN PART OR AS A WHOLE WITHOUT THE WRITTEN PERMISSION OF THOGUS PRODUCTS COMPANY IS PROHIBITED.

8 7 6 5 4 3 2 1